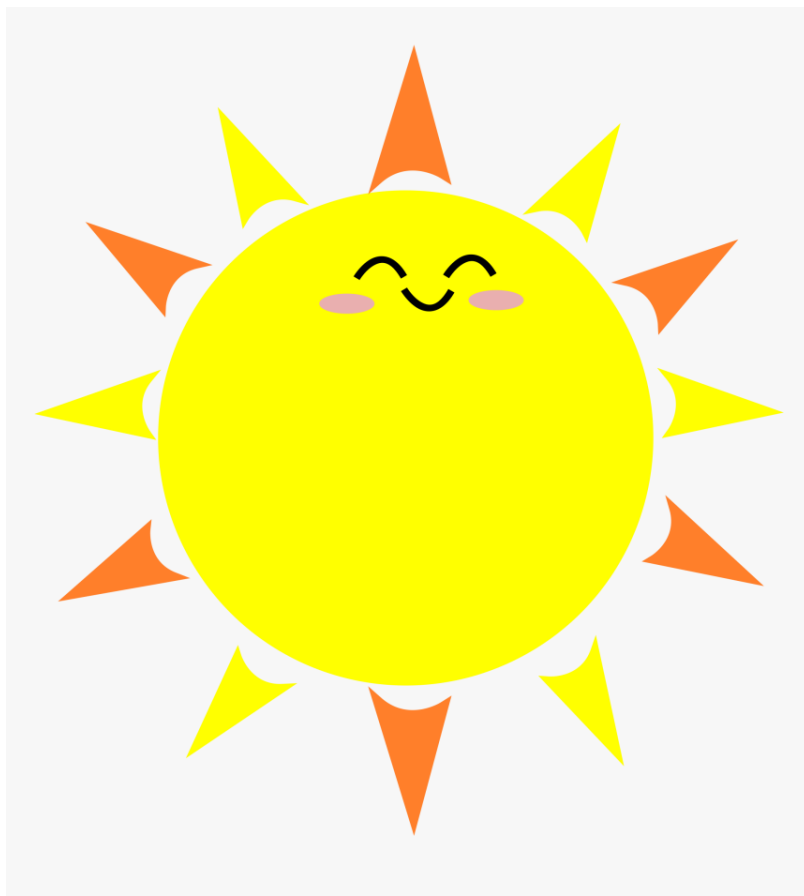


# "The Needs of a Plant" Song

## KEY VOCABULARY



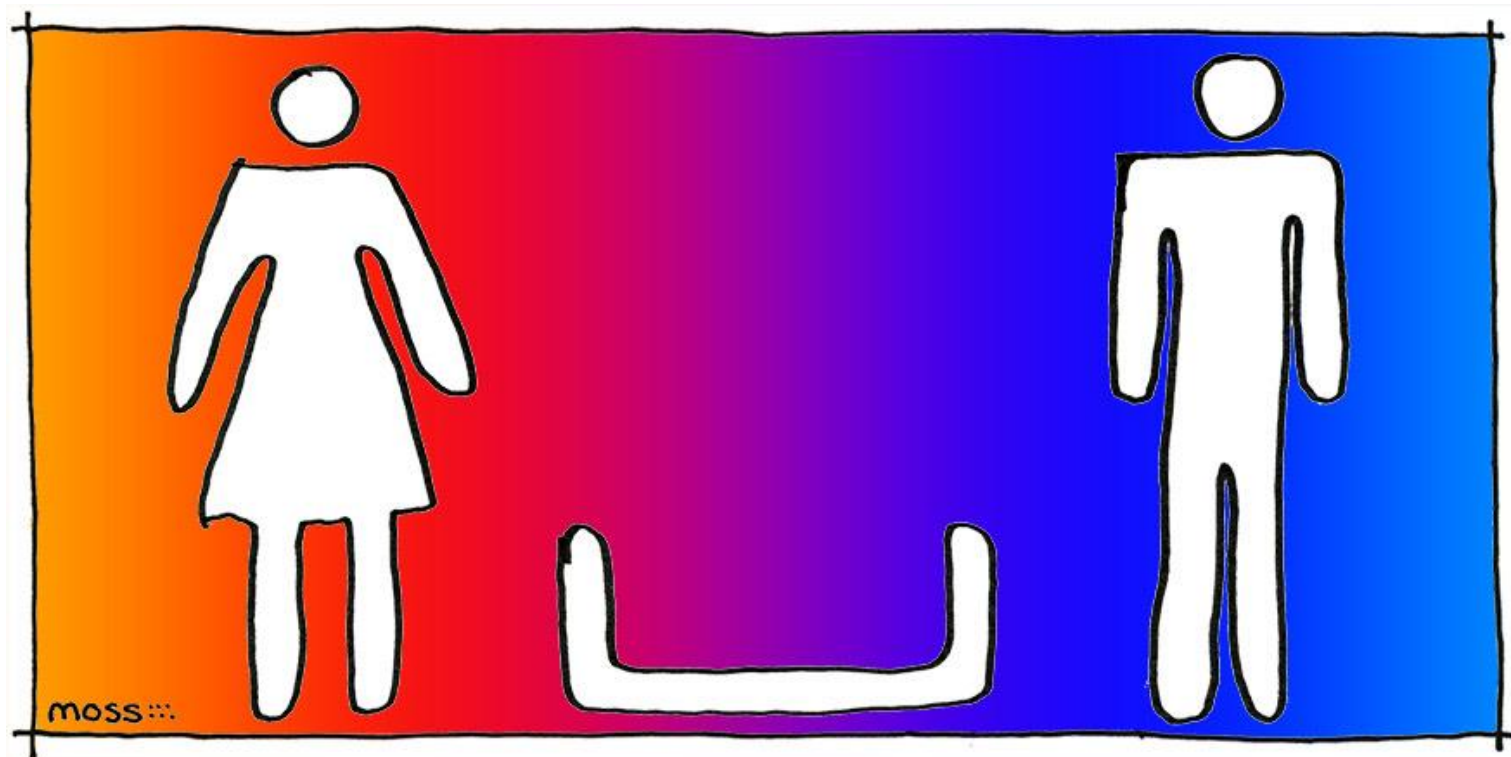


**light**



**alive**





**space**



**tight**

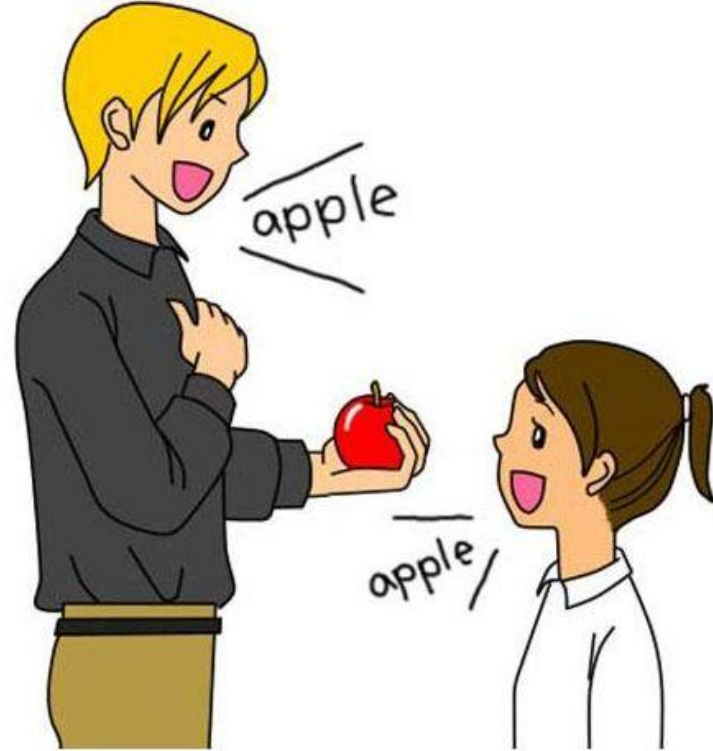
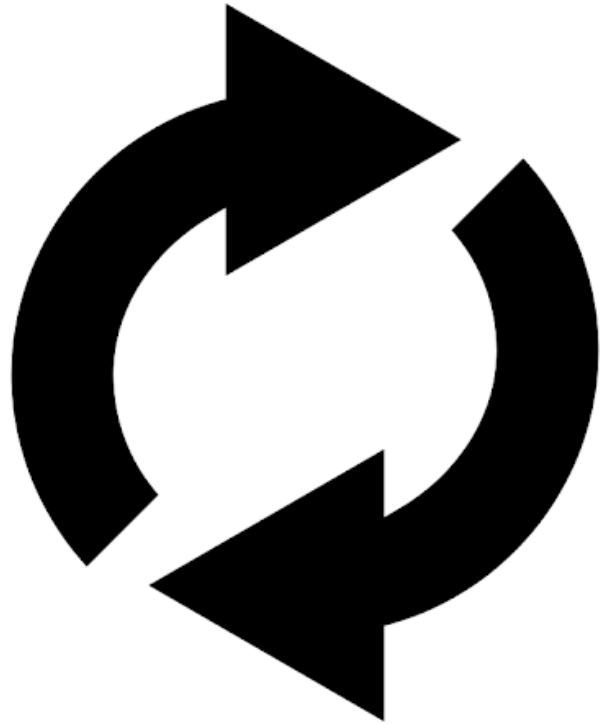


**soil**



**water**



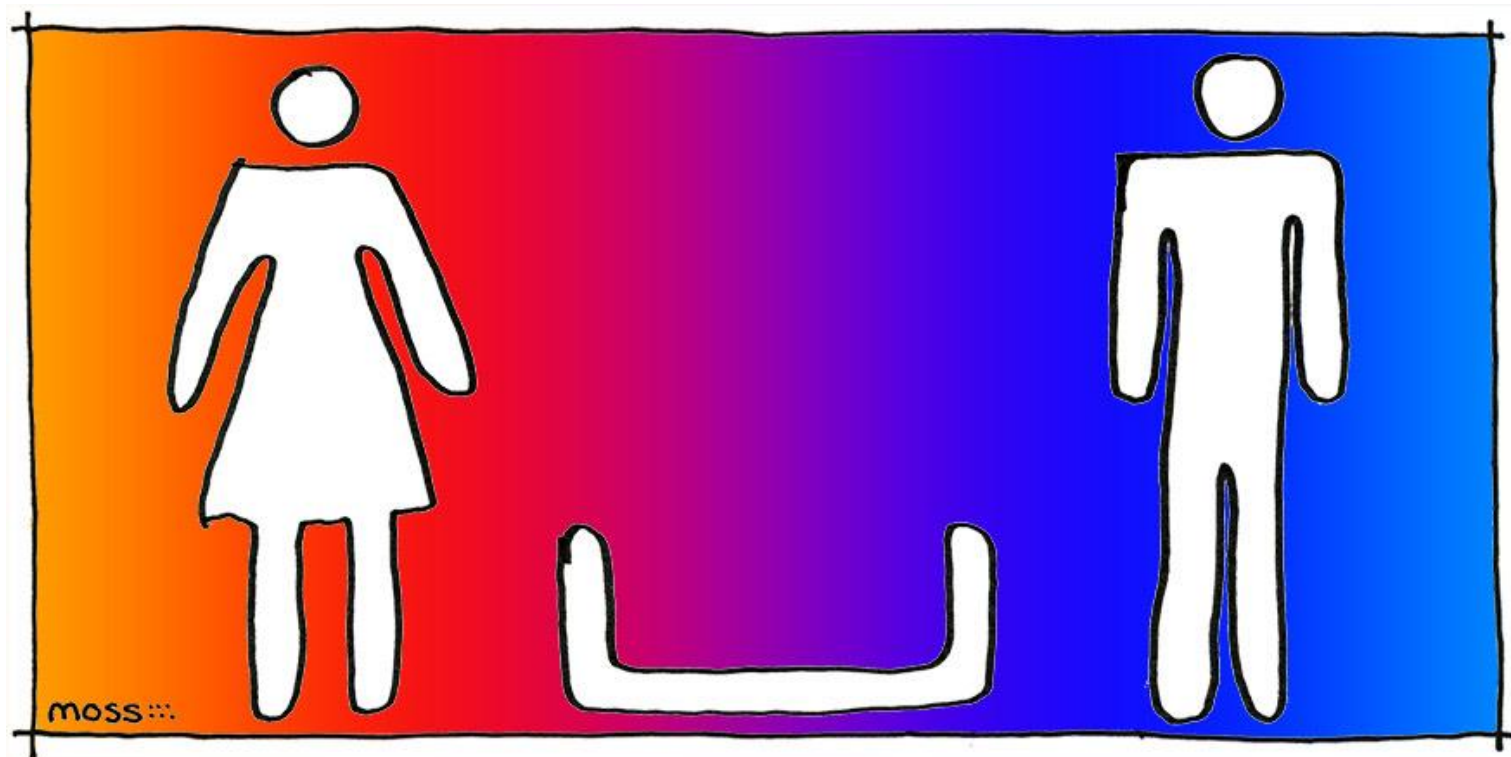


**repeat**





**Again!!**

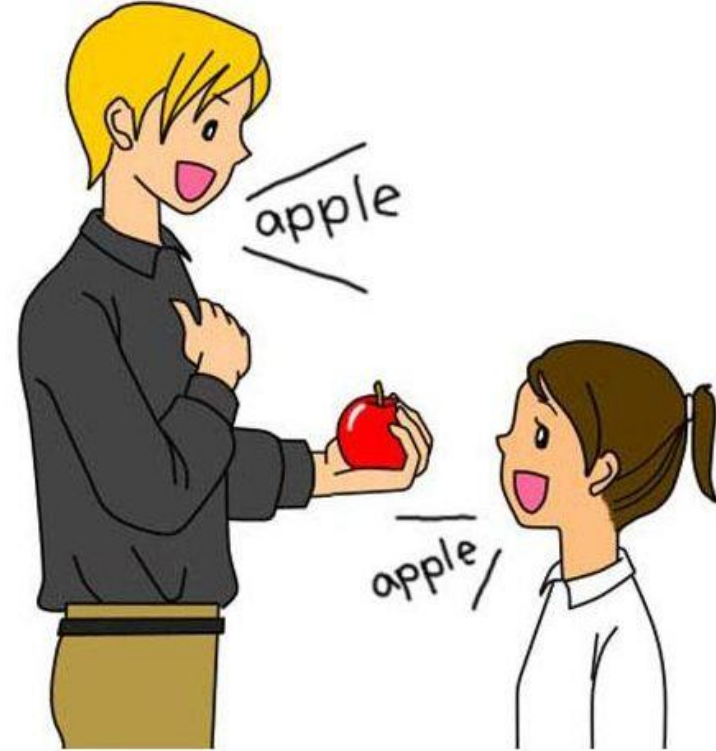
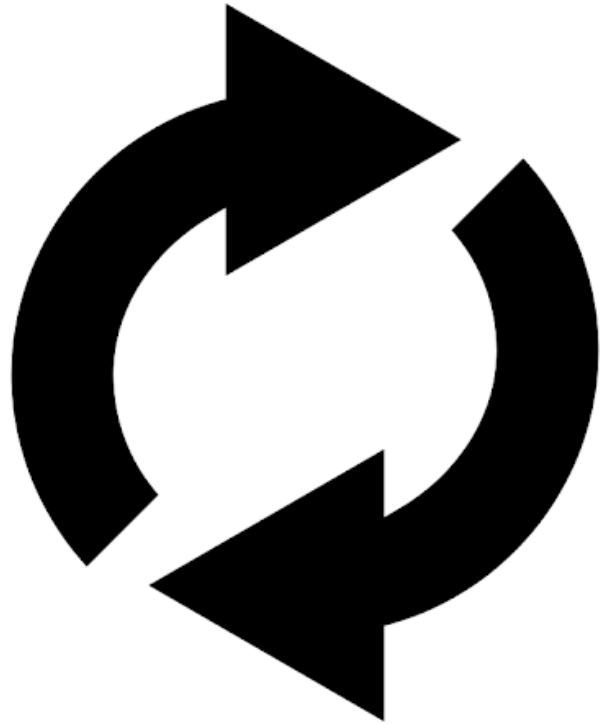


**space**



**tight**





**repeat**



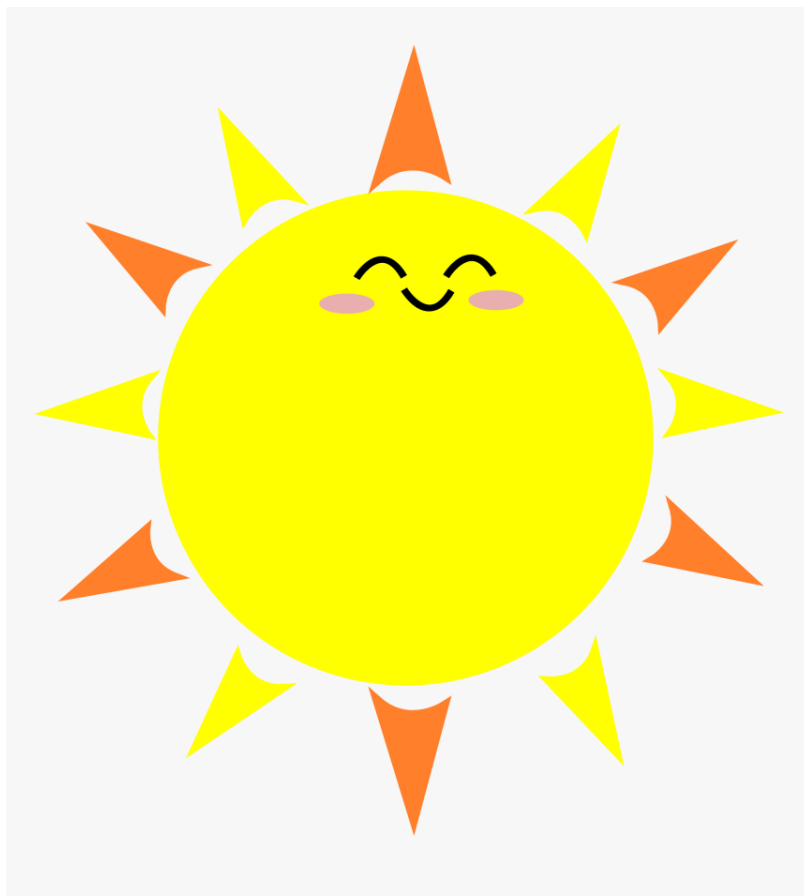


**water**



twinkl.com

**alive**



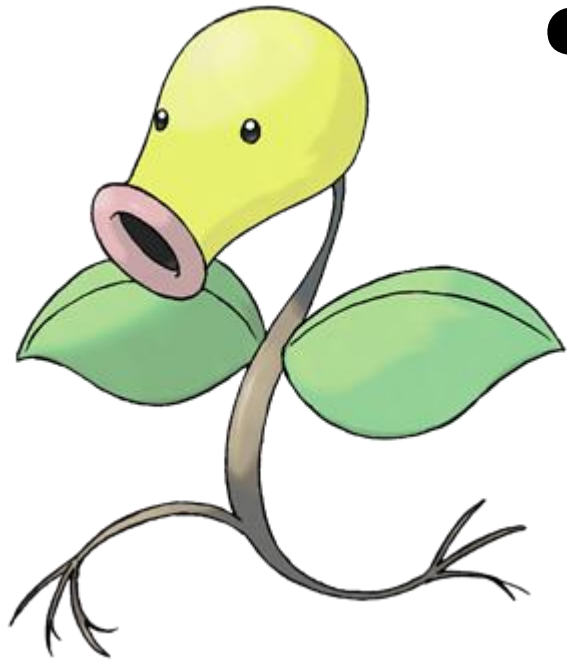
**light**



**soil**



One more  
time!

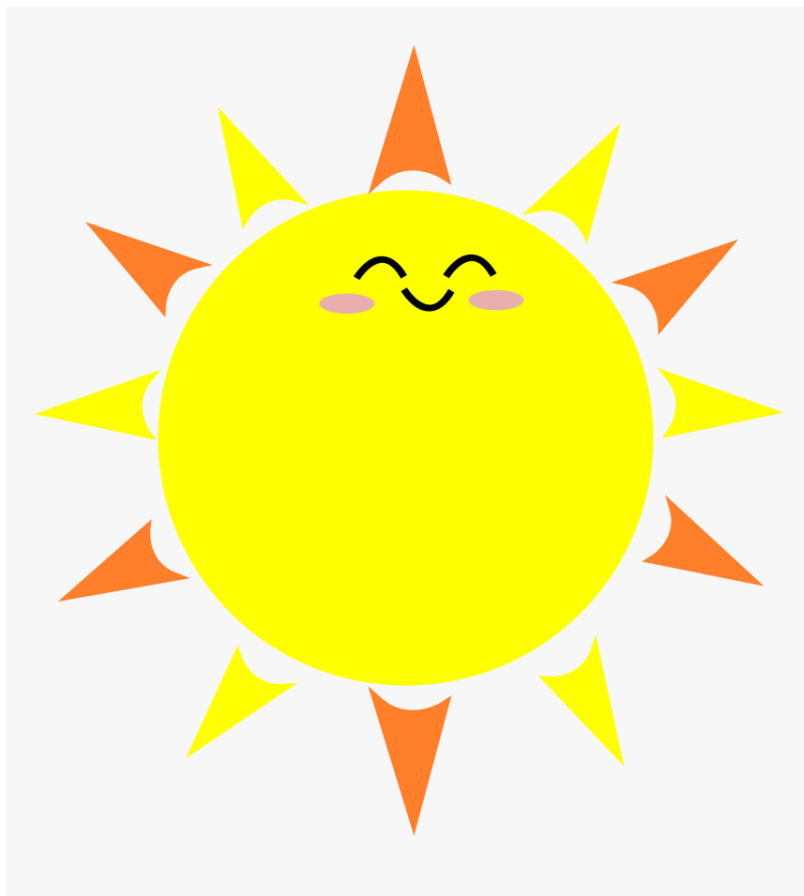




**alive**



**water**

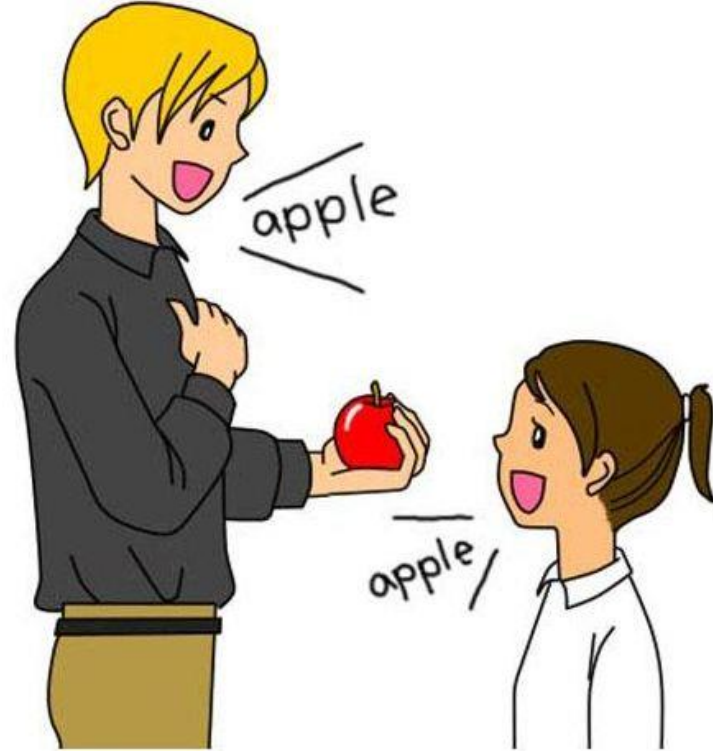
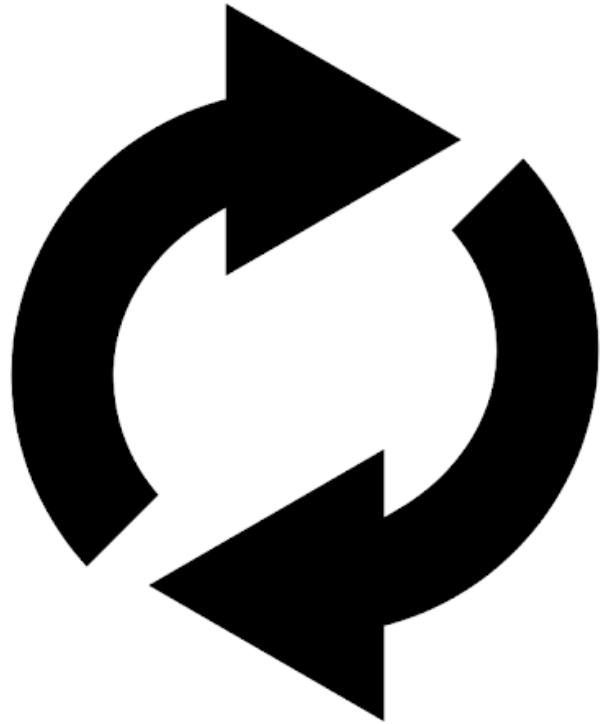


**light**

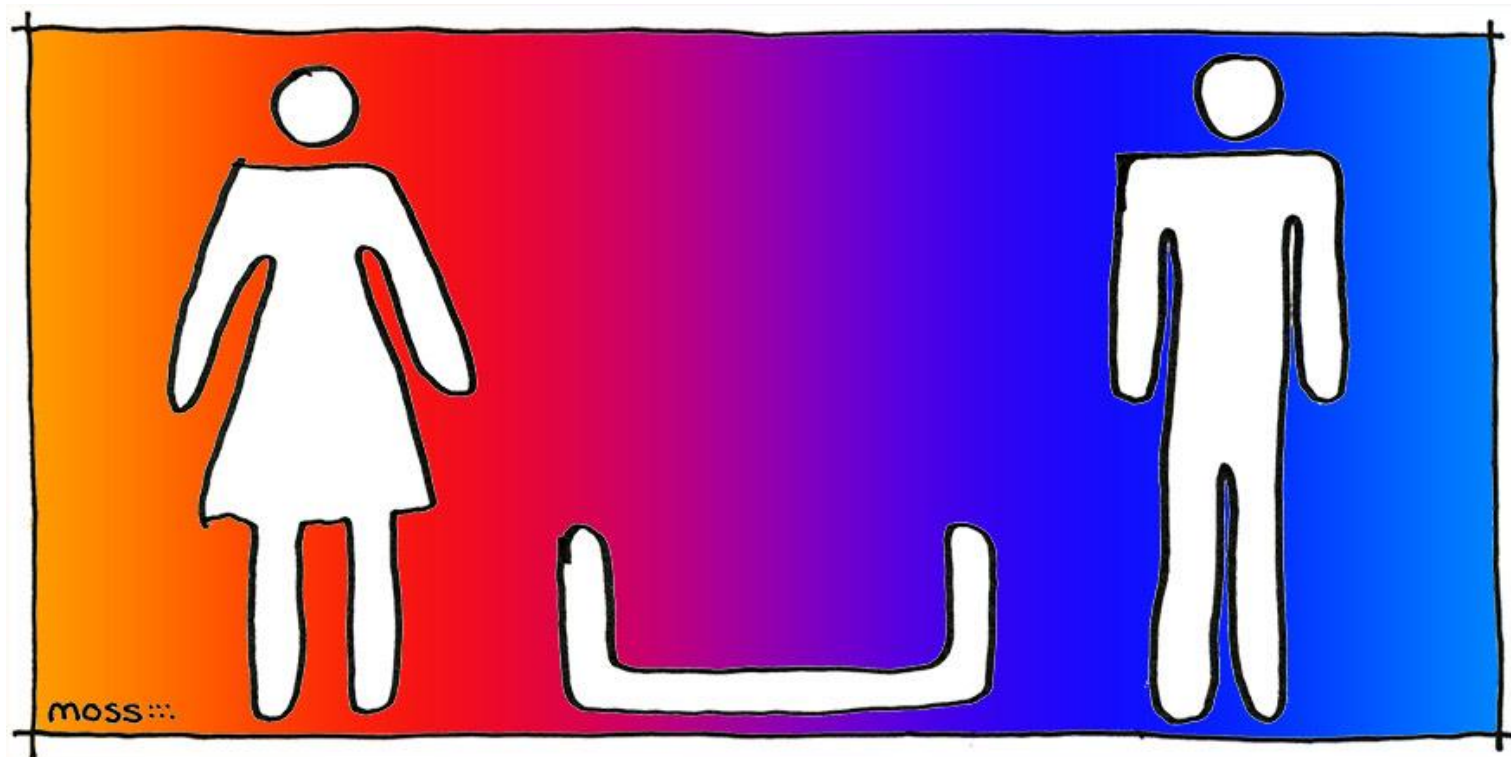




**tight**



**repeat**



**space**





**soil**



# Good job!

